



For High Runtime Split Air Conditioners

Climateq

Established in 2010, Climateq specialises in retrofit energy saving HVAC controls. Our range of solutions are designed for split air conditioners, VRF & chiller systems delivering comfort and processing cooling ensuring significant carbon savings from day one with a typical return on investment in under 3 years

Contact us today for a review of your HVAC and find out how much Climateq can reduce your energy consumption and carbon emissions by 20%

The **enPact** is an intelligent, energy saving retrofit solution designed for compressor driven split air conditioners, providing comfort and process cooling. The enPact employs precision sensors to monitor air & refrigerant temperatures.

The internationally patented technology uses predictive analysis to then calculate the optimum time to cycle off the compressor and start making savings.

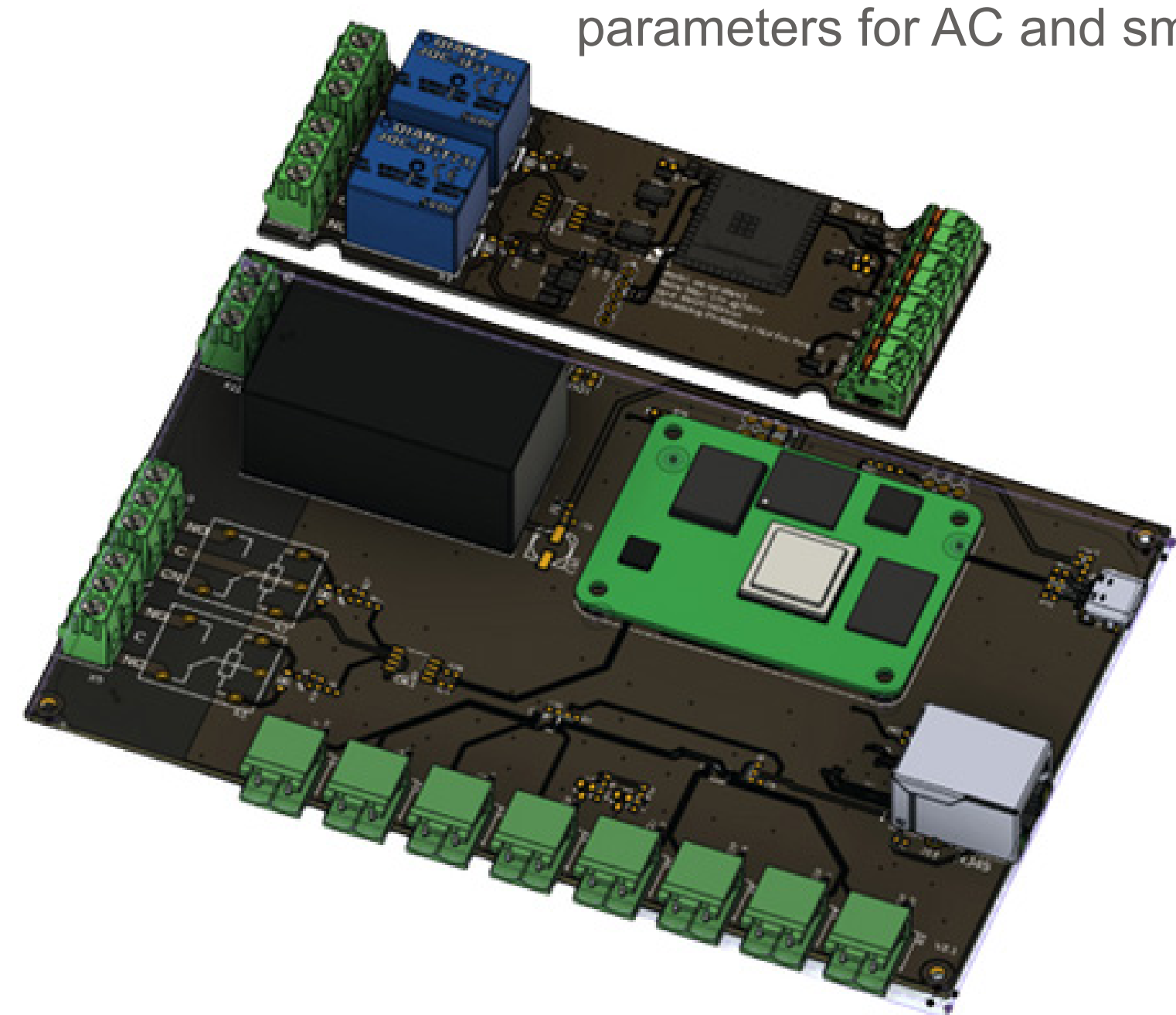
The evaporator however, continues to run and maintains the space temperature because of the residual chilled refrigerant still in the system. Once the sensors detect that the temperature has started to change, the compressor is brought back on line and the process is repeated.

enPact is available as a standalone device or integrated into a monitoring platform for data collection purposes and the remote adjustment of settings.

The **enPact** intelligent energy-saving thermostat

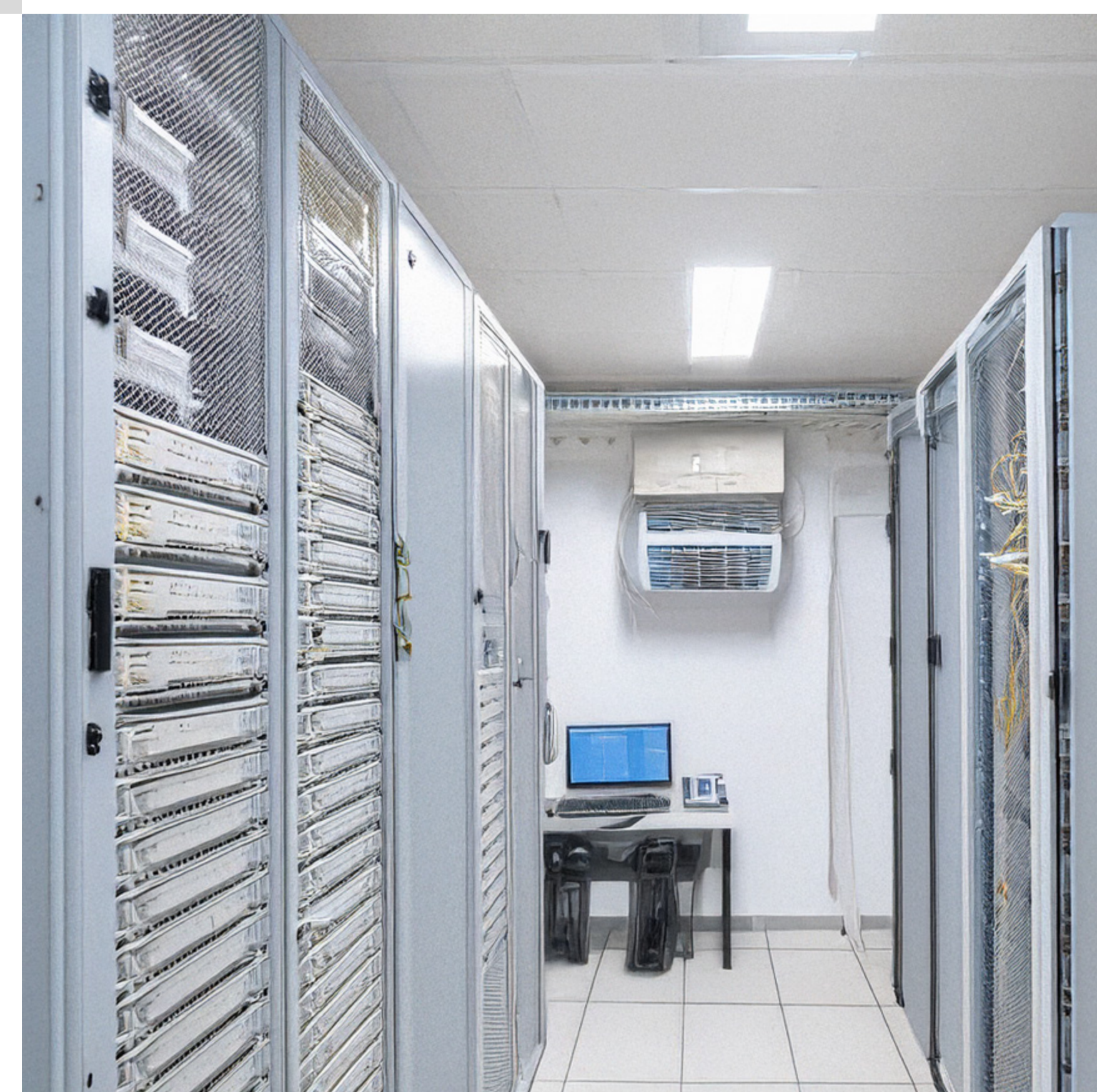
- ✔ Retrofit control
- ✔ Prevents the unnecessary overrunning of the compressor
- ✔ Designed for comfort & process cooling split air conditioners
- ✔ Preserves the lifespan of equipment
- ✔ Optional remote access, monitoring & alerts
- ✔ Average 20% energy savings without affecting the space temperature
- ✔ Typical ROI in 3 years
- ✔ Compatible with all major manufacturers
- ✔ 3 year warranty

3 sensor version: Monitors basic refrigeration parameters for AC and small cold rooms



8 sensor version: Provides full system and environmental monitoring (including proactive maintenance & refrigerant leak detection)

Dimensions:	17.3cm x 10cm x 3cm excluding temperature sensors
Unit weight:	330g, 11.64oz
Electrical supply:	5 Volt DC
Operating:	2mA (220V), 1mA (110V)
Environment:	0°C to 55°C, RH 95%
Storage environment:	-25°C to 85°C, RH 15% to 95%
Certifications:	CE UL (pending approval)
Temperature sensors:	NTC type, -50°C to 150°C
Relay:	Normally close / normally open Normally closed powered down Voltage: 0 to 250V (AC or DC) Current: 10A continuous



For more information on how the **enPact** can significantly reduce your energy usage contact:

Climateq Ltd | T +44 (0)1202 201480 | E info@climateq.co.uk | W climateq.co.uk